



Stop and Mark a Pause in Namhae

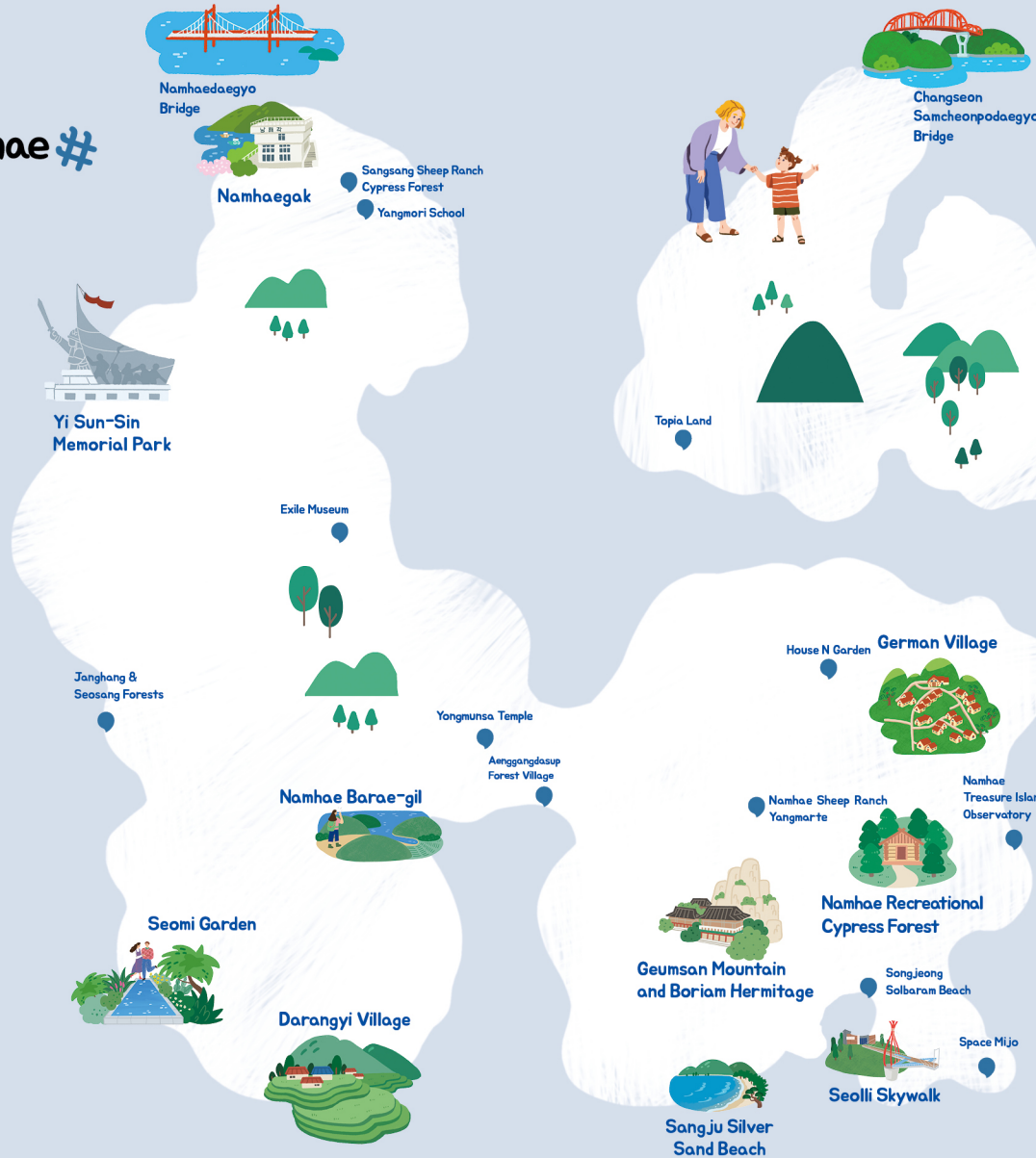
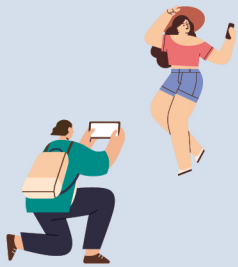
Right Now, Right Here Namhae



2024

Right Now,
Right Here **in Namhae #**

Gateway to the Namhae Road	4
German Village	5
Yi Sun-Sin Sea Park	6
Geumsan Mountain and Boriam Hermitage	7
Darangyi Village	8
Seolri Skywalk	9
Sangju Silver Sand Beach	10
Namhae Recreational Cypress Forest	11
Seomi Garden	12
Namhaegak	13
Namhae Barae Road	14
Other Tourist Attractions	15
Major Festivals Held in Namhae County	18
How to get to Namhae	19



Namhae, the Treasure Island

Namhae-gun consists of five inhabited and 73 uninhabited islands, including two large islands, Namhae-do and Changseon-do, located in the center of the southern coast of the Korean Peninsula, with a population of about 40,000 people. As the main island, Namhae Island is Korea's fifth largest island after Jeju Island, Geoje Island, Jindo Island, and Ganghwa Island. Balmy in winter and cool in summer, the county with ideal climactic conditions makes for an ideal destination for traveling, while its beautiful coastline is noted for natural landscapes strewn with mountains and islands small and large. Namhae is filled with copious legends and tourist attractions, earning the nickname "Treasure Island."



Gateway to the Namhae Road

Welcome to Namhae



1 Namhaedaegyo Bridge & Noryangdaegyo Bridge

Opened in 1973, Namhae Bridge was the first suspension bridge in Korea, connecting Namhaedo, which was cut off from the mainland, for the first time. It is considered to be the most beautiful bridge in Korea.

Noryang Bridge was opened in 2018 as a replacement for Namhae Bridge. It is the world's first bridge with an inclined bridge tower and utilizes advanced technology with a three-dimensional cable system.



2 Changseon Samcheonpodaeogyo Bridge

With a total length of 3.4k, Changseon-Samcheonpo Bridge is the first bridge in Korea to connect one island to another. Five bridges connect the three islands between Changseondo and Samcheonpo in the Namhae, creating a spectacular sight.

3 Namhae-Yeosu Undersea Tunnel (planned)

The Namhae-Yeosu Undersea Tunnel connecting the Youngnam and Honam Regions, and scheduled to open in 2031, will make Namhae a transportation hub and a platform for tourism on the southern coast.



Selected as one of the Top 100 Korean Tourist Attractions

1

A trip to Germany without the need for a passport

German Village



German Village is a place where numerous Koreans who'd worked hard in Germany in the past and contributed greatly to the country's economic development settled in their old age after returning home. It was aimed to recreate the villages they lived in in Germany, creating a "small Germany in Korea". Since its completion in 2003, its white walls and orange roofs have become an iconic feature of Namhae. Well-kept gardens, German-style restaurants, German breweries, and German workshops add a touch of exoticism to the sea view. The German Village Beer Festival, held every October at the German Village Square, is one of the best festivals in the country. The Namhae Exhibition Hall for Dispatch to Germany offers a glimpse into the lives of miners and nurses who were dispatched to Germany.

Recommended Tourist Attraction

HOUSE N GARDEN



HOUSE N GARDEN is a village of 20 gardeners. There are 21 beautiful and unique houses and gardens, each with its own image and theme, where you can see unique horticultural works. You can take a leisurely stroll through the sculpture garden, topiary garden, and other types of gardens from around the world.



2

Do not announce my death!

Yi Sun-Sin Sea Park



Yi Sun-Sin Sea Park, the place where General Yi Sun-Sin's last cry echoes, was built in honor of Yi Sun-Sin and the sailors who sacrificed for their country in the Noryang Sea Battle. In addition to the ruins of the Namhae Gwaneumpo Yi Chungmugong, designated as Historic Site No. 232, there is also the Yi Sun-Sin Visual Experience Center, Hoguk Square, and Gwaneumpo Square. This is a holy place and a site of history that anyone interested in the past should visit at least once. It has a large, relaxing plaza and fountains, and is a great place to take the kids for a stroll as well. At the Yi Sun-Sin Visual Experience Center, you can see various exhibits about the Imjin War and a stereoscopic movie about the Battle of Noryang. You can also enjoy traditional folk games such as archery and pitch-pot at the Leadership Experience Center.

Recommended
Tourist
Attraction

Namhae Museum of Exile Literature



Namhae Exile Museum is the country's first and largest of its kind dedicated to literary works of those who lived in exile on Namhaedo Island. Once the site of exile during the Joseon Dynasty, Namhae is rich in culture and history. The museum houses exhibition halls specializing in varying themes for visitors to understand systematically the rare exile literary works and participate in experiential and educational programs.

3

The magnificent sunrise not found elsewhere



Geumsan Mountain and Boriama Hermitage



Geumsan Mountain, also known as "Namhaegeomgang" or "Sogeumgang," was named as such for its resemblance to North Korea's Geumgangsan Mountain, which is known for the stunning beauty of its oddly shaped rock formations. Legend has it that, at the end of the Goryeo period, Joseon Dynasty's first king Yi Seong-gye spent one hundred days praying here before founding his kingdom. Situated atop a rugged precipice of Geumsan Mountain, Boriama Hermitage is one of Korea's three major hermitages. Known to have been built by celebrated Buddhist priest Wonhyo during the Silla period, the hermitage comes with the legend that the spirit of Avalokitesvara here can grant an earnest prayer with one wish. The hermitage is also best-known for watching the rare but magnificent sunrise on clear days only, or it is visible to those who practiced virtue for at least three years.

Recommended
Tourist
Attraction

Yongmunsa Temple



Yongmunsa Temple is especially beautiful when the hydrangeas are in bloom. Nestled at the foot of Hogusan Mountain at 650 meters above sea level, it is the largest and oldest temple in Namhae and the one with the largest number of cultural properties. It offers a relaxing temple stay program for those who have tired bodies and minds.

4

"One of the 3 Must-Visits in Korea" by CNN

Darangyi Village



Darangyi Village is home to the Terraced Paddy Fields (Scenic Beauty No. 15), a narrow, long staircase shape that forms a mountain slope facing the blue sea, giving the village a unique island atmosphere, and is also famous for Amsu Rocks. The picturesque landscape of Darangyi Village, which is reminiscent of the highlands of Peru, was born out of necessity. The steep slope made it impossible to cultivate the rice fields, so stone pillars were built into the hillside, creating a terraced field with more than 108 levels. A sloping road leads down to the village, with winding alleyways between small buildings and a waterfront promenade lapped by the sea.

Recommended
Tourist
Attraction

Janghang & Seosang Forests



They may not look special or colorful, but the village forests along the seaside are important as they serve as a shelter for the villagers and as a protection against wind and waves. Janghang and Seosang Forests, which have become hot spots due to the scenery of the village forest and the sea, have colorful and charming shops and have gone viral as great places for taking beautiful photos.

5

Walk and fly above the sea!

Seolri Skywalk



This is an observatory that stands majestically on the hill behind Seolri Beach where you can feel the charm of Dadohae. The shape and scale of the observatory itself is so enormous that it can be seen even when far quite away from Sangju. The skywalk swing, also known as the 'sky swing', is 38 meters high and is inspired by the famous 'Bali swing' from Bali, Indonesia, a favorite vacation destination. It's an exhilarating ride that feels like you're touching the sky and plunging into the ocean at your feet. At night, the entire skywalk is illuminated with landscape lighting, and you can take great sunset photos anywhere. It is also famous as a filming location for the popular drama 'True Beauty'.

Recommended
Tourist
Attraction

Namhae Treasure Island Observatory



The architectural design of the Namhae Treasure Island Observatory was inspired by the lighthouse emitting beautiful light to the southernmost sea of Korea. Once inside, visitors can feel as if they are riding a super-luxury cruise ship to enjoy the panoramic 360-degree view of the sea. Equipped with a glass skywalk, the observatory is a great place for viewing the entire Namhae sea above picturesque cliffs.

6

Make memories of silver sand

Sangju Silver Sand Beach



The small islands form a lake in the ocean that sports calm waves and warm water temperatures, making it a great family vacation spot. The white sand shimmers brightly like silver and feels soft like silk, and the water is incredibly clean. The silky sand tickles between your toes as you walk barefoot. Behind the beach is a dense pine forest that makes it even more beautiful. There are campsites behind the forest, as well as a number of gourmet restaurants and charming cafes. This beach is popular with families and friends alike.

Recommended
Tourist
Attraction

Songjeong Solbaram Beach



This is the second largest beach in the Namhae Sea, with a rocky shoreline and more than 100-year-old Japanese black pines. The water is crystal clear and the white sand is wonderful. You can take fun photos at the framed photo zone and enjoy the surf at the beach. You can only reserve a campsite on-site on the day of use.

7

A time for healing in nature

Namhae Recreational Cypress Forest



Located in Samdong-myeon Naesan Village, called the land within an island, the Cypress Nature Forest Resort is a dense forest of phytoncide-rich cypress and cedar trees planted in the 1960s. It is the perfect place to enjoy relaxation and healing, where you can feel comfort just by walking through the dense forest. There are accommodations and campgrounds where you can relax in nature. There are also guided forest tours and various experience programs available by reservation.



Recommended
Tourist
Attraction

Namhae Sheep Ranch



At this small ranch located atop Gudusan Mountain, visitors can experience shepherding or feeding a herd of white sheep or watching the shepherd dog Border Collie at work. The area comes with a trail with occasional sightings of sheep and the cool valley in addition to Sangsang Sheep Ranch Cypress Forest and Yangmori School.

8

Find a spot to take the best photos of your life

Seomi Garden



It is a European-style garden created by planting trees and flowers in the unique and beautiful terraced paddy fields of Namhae. It is registered as Gyeongnam Private Garden No. 1. The stone walls, ponds, trees, and flowers make you feel like you're in a small French village. The scenery that changes from floor to floor and the unique view of the blue Namhae sea are so charming that you'll want to keep it to yourself. The nine small gardens are divided into concepts, each with its own character and sometimes combined with each other to show a different view. The different flowers and paths that bloom in each of the four seasons are beautiful. Here you can take great photos in any location.

Recommended
Tourist
Attraction

Topia Land



The first and only topiary garden in Korea, 'Topia Land' is a green forest that freely expresses various shapes of trees and provides a healing moment through their presence. It is registered as Gyeongnam Private Garden No. 3. You can walk around the cypress trees, of which there are more than 500, and take a foot bath while enjoying the view overlooking the Jijok coast of the Namhae.

9

The beginning and end of a trip to Namhae

Namhaegak



Built in 1975, Namhaegak has been an accommodation and resting place for tourists visiting Namhae Bridge for 44 years. As the first place in Korea to offer a view of the suspension bridge, it was a popular honeymoon and school field trip destination. However, it lost its use over time, and in 2021, it was reopened as a cultural space that tells local stories and allows travelers to sketch Namhae. Namhaegak consists of an archival exhibition hall to learn about the history of the Namhae Bridge and Namhaegak, a tourism platform to experience unique tourism souvenirs and benefits, and a sea library to provide a break from the daily routine, providing excitement at the beginning and end of any trip to Namhae.

Recommended
Tourist
Attraction

Space Mijo



The former Mijo Port freezing warehouse has been revitalized as a multi-faceted cultural space. You can enjoy food and drinks utilizing resources from the Namhae and Mijo areas. In the performance hall, you can enjoy concerts, lectures, and other events with the backdrop of the sea at Mijo Port.

10

'Mori's Road' Namhae Barae Road 251km

Namhae Barae Road



Namhae is a beautiful treasure island that earned the nickname 'Flower Garden' 500 years ago. Namhae Barae Road is a walking path that perfectly combines the natural beauty of Namhae with walkability. As of February 2024, there are 16 main routes, 4 branch routes, 2 island routes, and 2 village-themed routes with a total distance of 251 kilometers. The main route is a circular one that connects the entire island, while the branch routes and village-themed routes are short, circular walking tracks that let users return to their original point. The word 'barae' is a local term for the work of Namhae mothers who go out to the tidal flats at low tide to collect seafood by hand to feed their families.

Recommended
Tourist
Attraction

Aenggangdasup Forest Village



Aenggangman Bay is one of the two seas trapped by the coast of Namhae. The local-sounding name "Aenggang" refers to the bay's shape resembling an urn laid down or to the sound of the wave in the serene sea evocative of the sweet voice of a nightingale. This precious village embraces the beautiful blue sea and the forest. At the Sinjeon Forest Wild Flower Tourist Complex in particular, visitors will be captivated by the sight of the scenic landscape and clean and pure ecological environment.



Other Tourist Attractions



Mulgeon Windbreak Forest

A lush windbreak forest of over 2,000 trees forming a crescent moon shape creates a magnificent sight, and the beach featuring white pebbles rounded by fierce waves boasts of the unique visual beauty of the South Sea. In nature, the purpose of windbreak forests is to slow wind down, trap seawater, and protect fish habitats.



Namhae Healing Forest Town

This is a place where various age groups, from children to adults, can enjoy the forest together. It is a forest eco-cultural space where you can experience beautiful forest trails and various experience programs.



Museum Namhae & Art Stay

This is a multi-faceted cultural space that was remodeled from a closed school. It holds exhibitions for various genres such as visual art, sculpture, and installation, and conducts local connection programs with artists in residence. Outside, there is a pool and an auto campground for families and children.



Changseon Danhang Giant Machilus thunbergii

As you run along the beach from Changseon-Samcheonpo Bridge toward Danhang, there is a place that catches your eye. It's a 500-year-old Giant Machilus thunbergii, and when you see it from a distance, you can almost mistake it for a small garden. You can't help but be impressed by its majestic appearance and the power of nature. Just like Little Prince has a baobab tree, Namhae has a Giant Machilus thunbergii.



Byeolhaelo

Byeolhaelo means 'a journey to experience the sea of ferns,' and is themed around ferns, an iconic forestry product of Namhae. You can feel the exotic atmosphere of Gain-ri, Changseon-myeon, the largest fern production area in Korea. Byeolhaelo has a fern-shaped relaxation space where you can enjoy a beautiful view of the fern-covered hills and the sea together.



Treasure Island Horse Riding Land

This is a public equestrian center built on Changseondo, which was established as a ranch during the Joseon Dynasty. You can interact with horses and participate in various experiences. You can safely enjoy horseback riding around the circular stables and feeding horses under the guidance and instruction of professionals.



Larchiveum Namhae

Larchiveum Namhae is a multi-faceted cultural space with hot tea and a bakery. The LP Museum displays 1,000 LPs and books which have been collected by MBC Gyeongnam since 1968. It also hosts various art and archival exhibitions.



Jijok Bamboo Fishing Weir

Bamboo Fishing Weir is a primitive fishing method in which bamboo nets are placed against the direction of the tidal current, and spread apart in a V shape. This is a method of catching fish by utilizing the fast current of Namhae, which is up to 13 kilometers per hour. The anchovies caught at the Bamboo Fishing Weir are considered the best in the country because of their natural freshness.



American Village

You can find a small American village in Namhae. It was built for Korean Americans who want to return to Korea in their old age. It consists of American-style wooden houses. The entrance to the village overlooking Angang Bay is lined with metasequoia trees. If you want to experience a traditional American house, you can stay here.



Sachon Beach

This beach is less crowded and more popular with couples looking for a slower pace with pastel-colored sunsets. Low hills line the beach, and the lake-like waters are lit up at sunset. In recent years, the beach has become known as a car camping and pet-friendly beach.



Namhae Mask Performance Museum

This museum was built by remodeling the Dancho School, which was closed in 2008. It displays masks from around the world along with materials related to performing arts published in Korea and abroad donated by the late Professor Kim Heung-woo, a giant of the Korean theater industry. Performances and screenings are held on weekends.



Namhae Traditional Market

From Jukbang anchovies caught in the pristine waters of the sea to abalone, king prawns, and plump cutlassfish, to Namhae garlic, spinach, Changseon ferns, and Namhae rapeseed oil and treasure island beef, the pride of Namhae. Fresh sashimi is also available right on the spot, and there is a food alley in the back of the market.

Major Festivals Held in Namhae County



May

Treasure Island Mijo Port Anchovy Festival

Mijo Port, a Napoli of Namhae, is famous as the center of various seafoods including anchovy. The festival is held in May when fresh anchovy tastes best. Visitors to the festival can enjoy watching anchovy auctions and take part in making pickled anchovy. The festival also offers various experiential programs, making the visit here very enjoyable. Visitors can observe fishermen collecting anchovies from the net twice a day and taste delicious anchovy dishes throughout the festival.

July

Treasure Island Garlic & Korean Beef Festival

This is a festival where you can explore Treasure Island garlic and Korean beef, the iconic specialties of Namhae. You can taste and enjoy Namhae garlic, which grows in the sea breeze and has a pungent aroma, and Namhae beef, which is carefully raised in a clean environment.



October

German Village Beer Festival

This festival started in the fall of 2010 and is modeled after the Oktoberfest in Munich, Germany, one of the top three festivals in the world. You can sample authentic German beer and sausages in this exotic Namhae German village settled by miners and nurses who were dispatched to Germany. Events include a parade from the entrance of the German Village to the main stage in the square, followed by lively entertainment in the Big Tent, where everyone is invited to toast by cheering 'prost' (cheers in German) and enjoy a beer.



How to get to Namhae



You may not realize it, but Namhae is an island.

In the past, you had to take a boat from the mainland to get here, but bridges have made it easier to get around.

Surrounded by the sea, the road to get to Namhae is always beautiful and peaceful.



By airplane

The Sacheon and Yeosu airports are 40 minutes away.

From the airport, you can rent a car or use a car-sharing service to get to Namhae.

By train

Suncheon Station and Jinju Station, which are served by KTX and SRT, are 40 minutes away.

You can easily get to Namhae by renting a car or using a car-sharing service. In Jinju, there are intercity buses to Namhae.

By bus

You can easily get to Namhae by taking an intercity bus from Seoul, Daejeon, Busan, Changwon, Masan, or Jinju.

It takes a bit of time, but it takes you right to Namhae-eup, and the scenery is beautiful.





2024
 Right Now,
 Right Here **in**
Namhae #



Namhae, the Special Place Awaits You



We love Namhae as it is

Be Part of Namhae

Capture Travels in Namhae



남해관광문화재단
 NAMHAE FOUNDATION FOR TOURISM & CULTURE

This print is made with eco-friendly paper and soybean oil ink.